

Power MIG® 140T & 140C

Power MIG®. The Professional's Choice™.

Home projects and repair, sheet metal autobody work, farm and small shop welding—the Power MIG® 140 designed for 120 volt household power does it all!

Select the economical Power MIG® 140T with simple tapped voltage control for basic MIG and flux-cored welding. Choose the Power MIG® 140C with continuous voltage control for more critical projects where precise adjustment is required.

Either way, Diamond Core Technology™ and the rugged drive system aid arc performance for MIG welding on thin gauge steel, stainless and aluminum. Or, use gas-less flux-cored welding for deep penetration on thicker steel, even outdoors! Compare performance, features and price and you'll agree. . . Power MIG®. The Professional's Choice™!

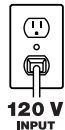


Shown:
K2471-1 Power MIG® 140C

Output



Input



Processes
MIG, Flux-Cored

Advantage Lincoln

Superior Arc Performance:

- **Exclusive Diamond Core Technology** delivers an outstanding arc you notice immediately compared to competitive models:
 - Great arc starts make getting started easy.
 - Wide voltage 'sweet spot' gives you a very forgiving arc, so setting controls is a snap.
 - Extremely low spatter reduces clean-up.
 - Outstanding aluminum & stainless performance, not just mild steel.
- **Wide 30-140 amp welding output range** is the highest output in 120 volt input power welder class.
- **MIG weld 24 gauge up to 10 gauge (.135")** sheet metal in a single pass. Weld up to 5/16" steel using self-shielded Lincoln Innershield wires (FCAW-S).

Professional Features:

- **Industrial Cast Aluminum Drive** features:
 - Dual gear-driven drive rolls for positive traction.
 - Patented split wire guides for optimal wire alignment.
 - Brass-to-Brass gun connections for enhanced connectivity.
 - Large industrial closed-design drive motor for improved torque and trouble-free performance.

- **Spool Gun Ready** – add the optional Magnum®100SG spool gun for reliable operation at the high wire feed speeds aluminum welding demands. No expensive outboard modules required.
- **No Hassle Tool-less Design** – for wire spool mounting, wire drive service and polarity changes.
- **Get More, Do More** – Start out with more contact tips, nozzles, drive rolls and wire electrode for MIG or flux-cored welding.
- **Innovative contact tip, drive roll and nozzle storage** keeps all your consumables close at hand.
- **Electrically 'cold' electrode** provides an added measure of operator safety.

Superb Quality:

- **Patent-pending Power Chassis™** channels airflow to cool power systems, structurally secures key components and traps wires and cables to avoid unnecessary abrasion.
- **Toughest PC Board Protection in the industry** – 'Potted' to seal sensitive components from the environment, 'trayed' in a tough plastic tray to add rigidity and shock resistance.
- Three Year Lincoln Warranty

TECHNICAL SPECIFICATIONS

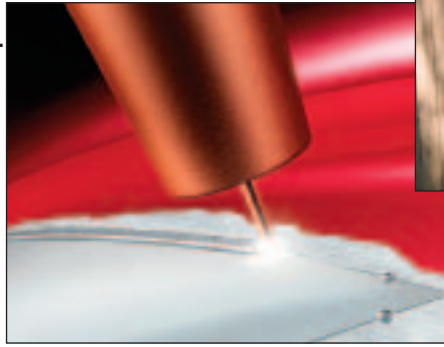
Product Name	Product Number	Input Power	Rated Output Current/Voltage/Duty Cycle	Input Current @ Rated Output	Output Range	Dimensions H x W x D inches (mm)	Net Weight lbs. (kg)
Power MIG® 140T	K2470-1	120/1/60	90A/19.5V/20%	20A	30-140 Amps DC 50-500 ipm WFS (1.3-12.7 m/min) Max. OCV: 33	14 x 10.15 x 18.6 (357 x 258 x 472)	58 (26.3)
Power MIG® 140C	K2471-1						



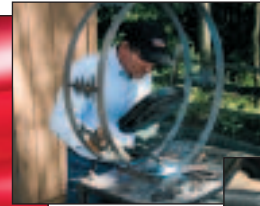
A CLOSER LOOK

SUPERIOR ARC PERFORMANCE

Diamond Core Technology™ delivers a superior arc across the entire welding range.



Thin Sheet Metal Autobody Work



Home Projects



Repair Work

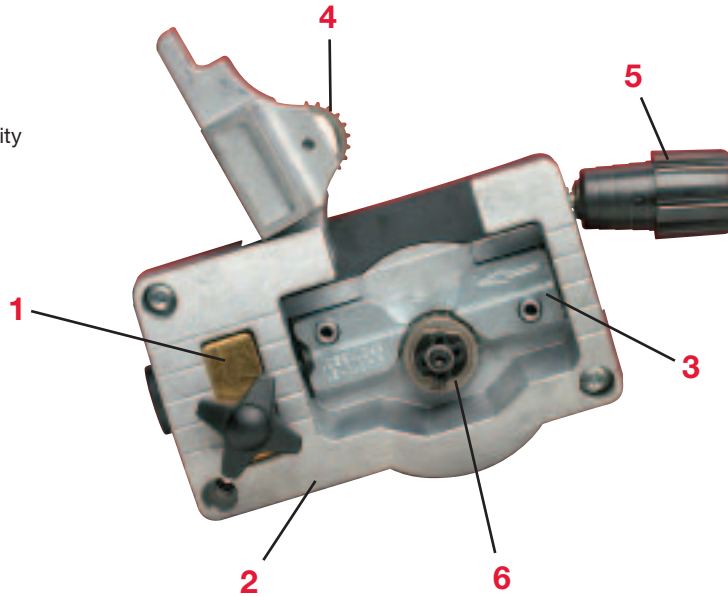
PROFESSIONAL WIRE DRIVE

Enhanced Quality

1. Brass Gun Connection Enhances Connectivity
2. Rigid Cast Aluminum Drive Aids Wire Alignment
3. Patented Split Wire Guide Reduces Tangles
4. Dual Gear-Driven Drive Rolls Deliver Positive Traction

Easy to Use

5. Easy Turn Tension Adjustment
6. Tool-less Quick Lock Drive Roll Changeovers



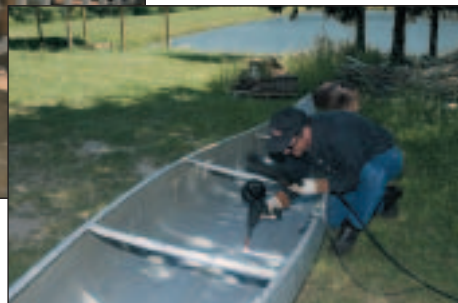
PRECISION ALUMINUM WELDING

Magnum® 100SG Spool Gun

Our low-priced spool gun is your most reliable aluminum feeding solution.



Great For Projects or Repair



Complete Kit. No Bulky Module Required.
Order K2532-1

A CLOSER LOOK

WHAT'S INCLUDED

Power MIG® 140T (K2471-0) & Power MIG® 140C (K2471-1)
Includes:

Gun

- Magnum® 100L gun and 10 ft. (3.0 m) cable assembly with brass gun connection and 4-pin MS-Type connection for trigger control (K530-6)
- .025" (0.6 mm) Contact Tips (Qty. 3) (KP11-23)
- .035" (0.9 mm) Contact Tips (Qty. 3) (KP11-35)
- Gasless Nozzle for Innershield® welding (KP1939-1)
- Gas Nozzle for MIG welding (KP21T-37)

Drive

- Spindle Adapter for 8" (203 mm) Diameter Spools (M15445-R)
- .025"-.035" (0.6-0.9 mm) Wire Diameter Wire Guide (KP2531-1)
- .025" (0.6 mm) Wire Diameter Drive Roll for MIG welding (KP2529-1)
- .035" (0.9 mm) Wire Diameter Drive Roll for MIG welding (KP2529-2)

- .030"-.045" (0.7-1.1 mm) Wire Diameter Knurled Drive Roll for Flux-Cored welding (KP2529-3)

Shielding Gas Apparatus

- Gas Regulator and 52 in. (1.3 m) Hose for use with CO₂ or argon blend gases. (For use with CO₂ shielding gas, order a Lincoln® S19298 CO₂ shielding gas bottle adapter.)

Welding Wire

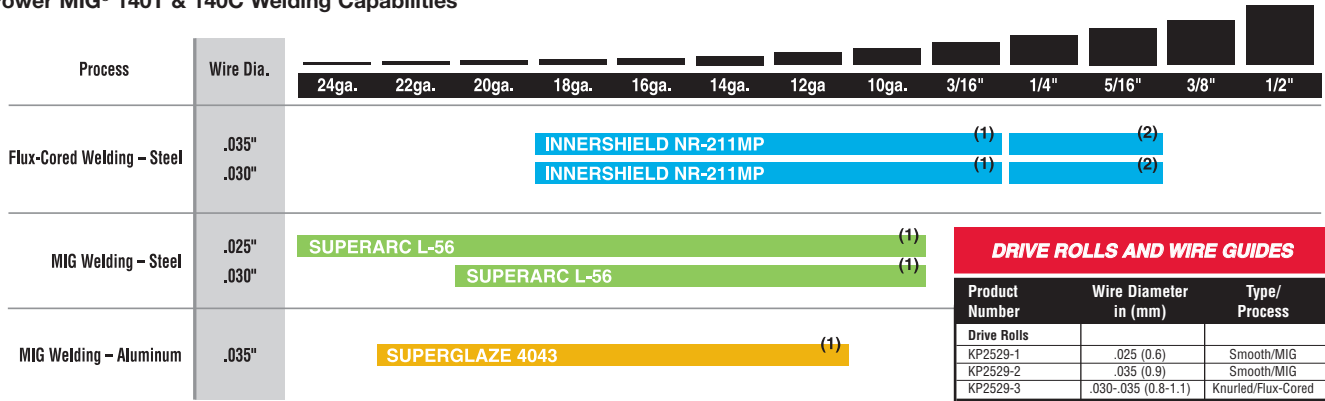
- 2 lb. (0.90 kg) Spool of .025" (0.6 mm) diameter SuperArc® L-56® premium MIG wire (ED030583)
- 1 lb. (0.45 kg) Spool of .035" (0.9 mm) diameter Innershield® NR®-211-MP flux-cored wire (ED027641)

Other

- Work Clamp and 10 ft. (3.0 m) Cable
- Instruction Manual (IM-890)
- How to Use DVD
- Learn to Weld Manual (LTW1)

PERFORMANCE PLUS

Power MIG® 140T & 140C Welding Capabilities



(1)Single Pass.
(2)Multiple Pass.

DRIVE ROLLS AND WIRE GUIDES		
Product Number	Wire Diameter in (mm)	Type/Process
Drive Rolls		
KP2529-1	.025 (0.6)	Smooth/MIG
KP2529-2	.035 (0.9)	Smooth/MIG
KP2529-3	.030-.035 (0.8-1.1)	Knurled/Flux-Cored
Inner Wire Guides		
KP2531-1	.025-.035 (0.6-0.9)	All
KP2531-2	.045 (1.1)	All

Protect Your Investment



- Protect your welder for up to 5 full years!
- No out-of-pocket costs for the life of the Extended Warranty - parts and labor are fully covered.
- Nation-wide coverage for all repairs.
- Backed by The Lincoln Electric Company - Not a third party.
- Price is less than the cost of a typical single repair.

RECOMMENDED OPTIONS

GENERAL OPTIONS

Welding Cart

Full-featured cart is designed to store and transport a welder, 80 cubic foot gas cylinder, welding cables and accessories. Includes an angled top shelf for easy access to welder controls, a lower tray for added storage space, a sturdy handle and a convenient cable wrap hanger.

Order K2275-1



Utility Cart

Heavy duty cart stores and transports welder, 150 cubic foot shielding gas cylinder, welding cables and accessories. Includes stable platforms for welder and gas bottle platform, lower tray for added storage capacity and adjustable height handle.

Order K520



Small Canvas Cover

Protect your welder when not in use. Made from attractive red canvas that is flame retardant, mildew resistant and water repellent. Includes a convenient side pocket to hold your welding torch or gun.

Order K2377-1



WIRE FEEDER OPTIONS

Magnum® 100SG Spool Gun

Designed to easily feed 4" (102 mm) diameter 1 lb. (0.45 kg) spools of .030" (0.8 mm) or .035" (0.9 mm) diameter SuperGlaze® aluminum MIG wire. Includes gun, adapter kit, .035" (0.9 mm) contact tips (qty. 3), gas nozzle, and a 1 lb. (0.45 kg) spool of SuperGlaze® 4043 .035" (0.9 mm) MIG wire. Packaged in a convenient carrying case.

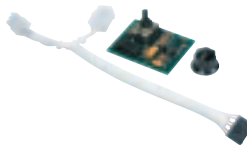
Order K2532-1



Spot Timer Kit

This timer allows you to set a fixed weld time of up to 10 seconds that is initiated when you pull the gun trigger. Ideal for making consistent spot welds on thin sheet metal.

Order K2525-1



Welding Fume Extractors

Lincoln offers a wide variety of welding fume extraction environmental system solutions, ranging from portable systems easily wheeled around the shop to shop-wide central systems servicing many dedicated welding stations.

Request Publication E13.40



POWER MIG® 140T & POWER MIG® 140C ORDER FORM

PRODUCT DESCRIPTION	ORDER NUMBER	QUANTITY	PRICE
POWER MIG® 140T – 120/1/60	K2470-1		
POWER MIG® 140C – 120/1/60	K2471-1		
Recommended General Options			
2-Year Extended Warranty - Power MIG 140T	X2470		
2-Year Extended Warranty - Power MIG 140C	X2471		
Welding Cart	K2275-1		
Utility Cart	K520		
Small Canvas Cover	K2377-1		
Fume Extraction System	See Bulletin E13.40		
Recommended Wire Feeder Options			
Magnum 100SG Spool Gun	K2532-1		
Spot Timer Kit	K2525-1		
TOTAL:			

CUSTOMER ASSISTANCE POLICY

The business of The Lincoln Electric Company® is manufacturing and selling high quality welding equipment, consumables, and cutting equipment. Our challenge is to meet the needs of our customers and to exceed their expectations. On occasion, purchasers may ask Lincoln Electric® for advice or information about their use of our products. We respond to our customers based on the best information in our possession at that time. Lincoln Electric® is not in a position to warrant or guarantee such advice, and assumes no liability, with respect to such information or advice. We expressly disclaim any warranty of any kind, including any warranty of fitness for any customer's particular purpose, with respect to such information or advice. As a matter of practical consideration, we also cannot assume any responsibility for updating or correcting any such information or advice once it has been given, nor does the provision of information or advice create, expand or alter any warranty with respect to the sale of our products.

Lincoln Electric® is a responsive manufacturer, but the selection and use of specific products sold by Lincoln Electric® is solely within the control of, and remains the sole responsibility of the customer. Many variables beyond the control of Lincoln Electric® affect the results obtained in applying these types of fabrication methods and service requirements.

Subject to Change – This information is accurate to the best of our knowledge at the time of printing. Please refer to www.lincolnelectric.com for any updated information.



THE LINCOLN ELECTRIC COMPANY®

22801 St. Clair Ave., Cleveland, OH 44117-1199 • 216.481.8100 • www.lincolnelectric.com